

## Cluain Aoibhinn, The Rise, Glasnevin, D. 9

Architect: Grainne Mallon & Associates

Client: Woodpark Development Partners

Located just off Griffith Avenue, this contract involved the Demolition of Existing Sheds and Construction of a part 2 storey / part single storey apartment block and complete fit out upon completion.

The finished building included 2 two bed apartments at ground floor level, and a spacious three bed apartment at first floor level, which included it's own private terrace.

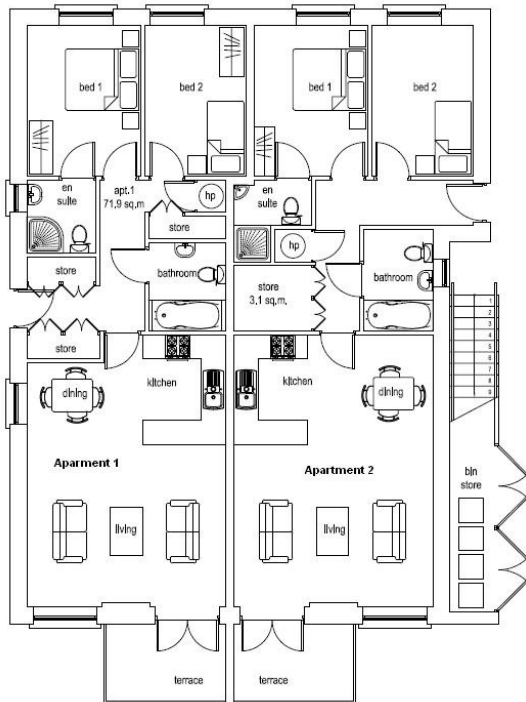
The contract brought with it a number of challenges including delicate demolition of the existing building as well as ongoing co-ordination with surrounding neighbours during the construction phase to minimise disruption to residents and businesses.

The finished building was then fitted out by our own interior design team to a very high standard.

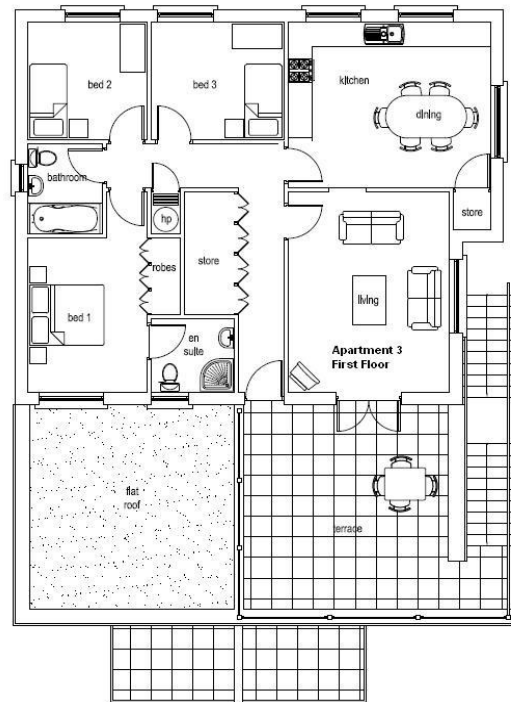
[www.mckeon.ie](http://www.mckeon.ie)



Front of Cluain Aoibhinn



Ground Floor Plan



First Floor Plan



Kitchen Apt 1



Living Room Apt 1

